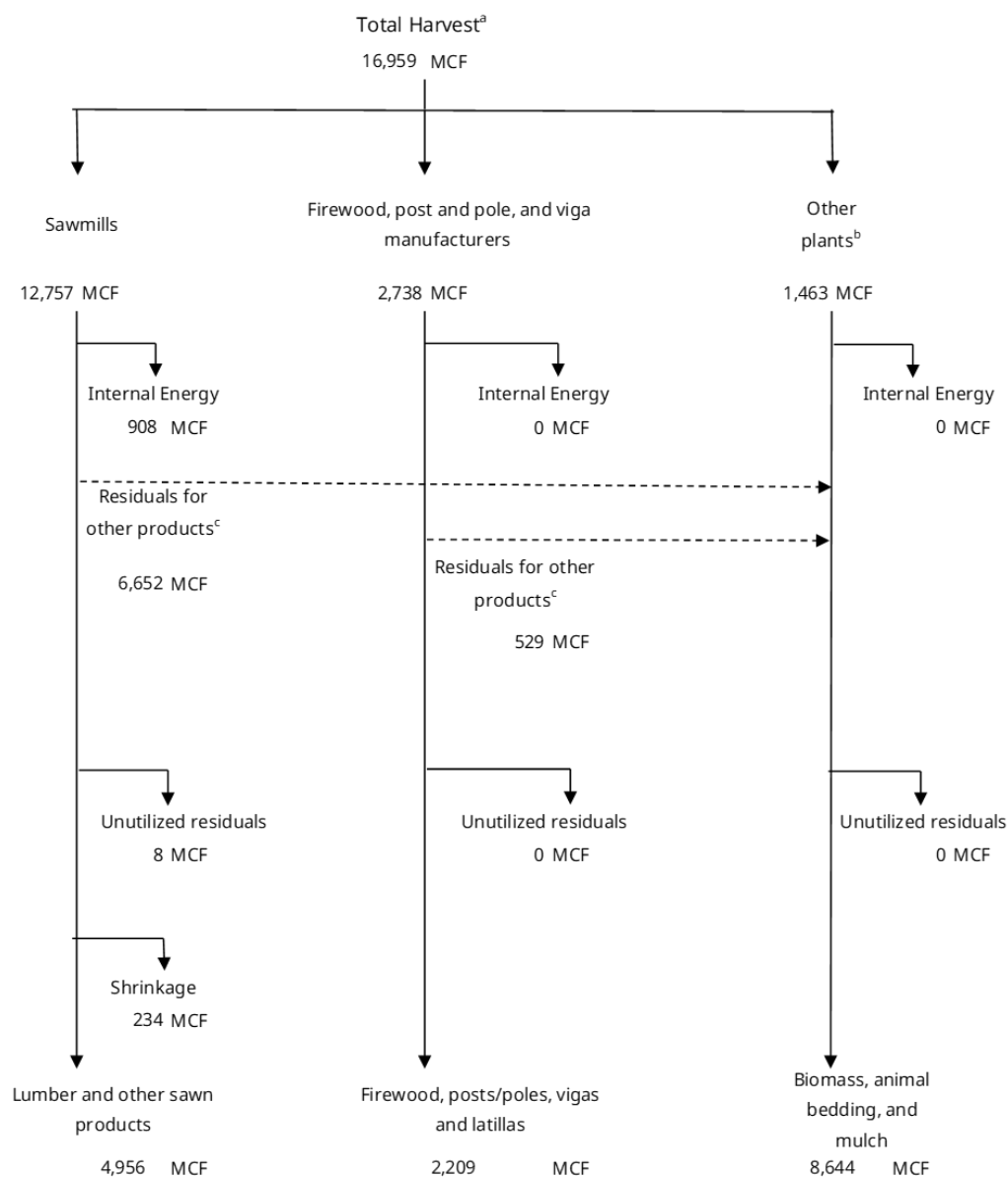


Arizona Timber Harvest and Flow, 2021



^a Harvest volume does not include bark.

^b Other plants include wood pellet manufacturers, as well as residual-utilizing facilities including bioenergy, animal bedding and mulch producers.

^c Other products include residuals sold for energy, landscape, mulch, animal bedding, and unspecified use.

Arizona Forest Products Industry Highlights

2021 Census Report*:

- A total of 77.9 MMBF Scribner was harvested from Arizona forests during 2021.
- Arizona had a total of 18 active primary wood product facilities during 2021.
- Approximately 8,647 workers were directly employed in the primary and secondary forest industry in Arizona during 2021.
- Ponderosa pine was the leading species harvested in Arizona during 2021, accounting for 89 percent of the total harvest.

*Amy R. Beagles, Eric A. Simmons, Lucas P. Koch, Samuel G. Scott, Lauren E. Sampson, Todd A. Morgan, and John D. Shaw. In prep. Arizona and New Mexico timber harvest and forest products industry, 2021. Resour. Bull. RMRS-RB-XXX. Fort Collins, CO: U.S. Department of Agriculture, Forest Service, Rocky Mountain Research Station. XX p.

This summary was generated using data collected under agreement with the USDA Forest Service's Forest Inventory & Analysis Program at the Rocky Mountain Research Station.

Website:



Contact Amy:



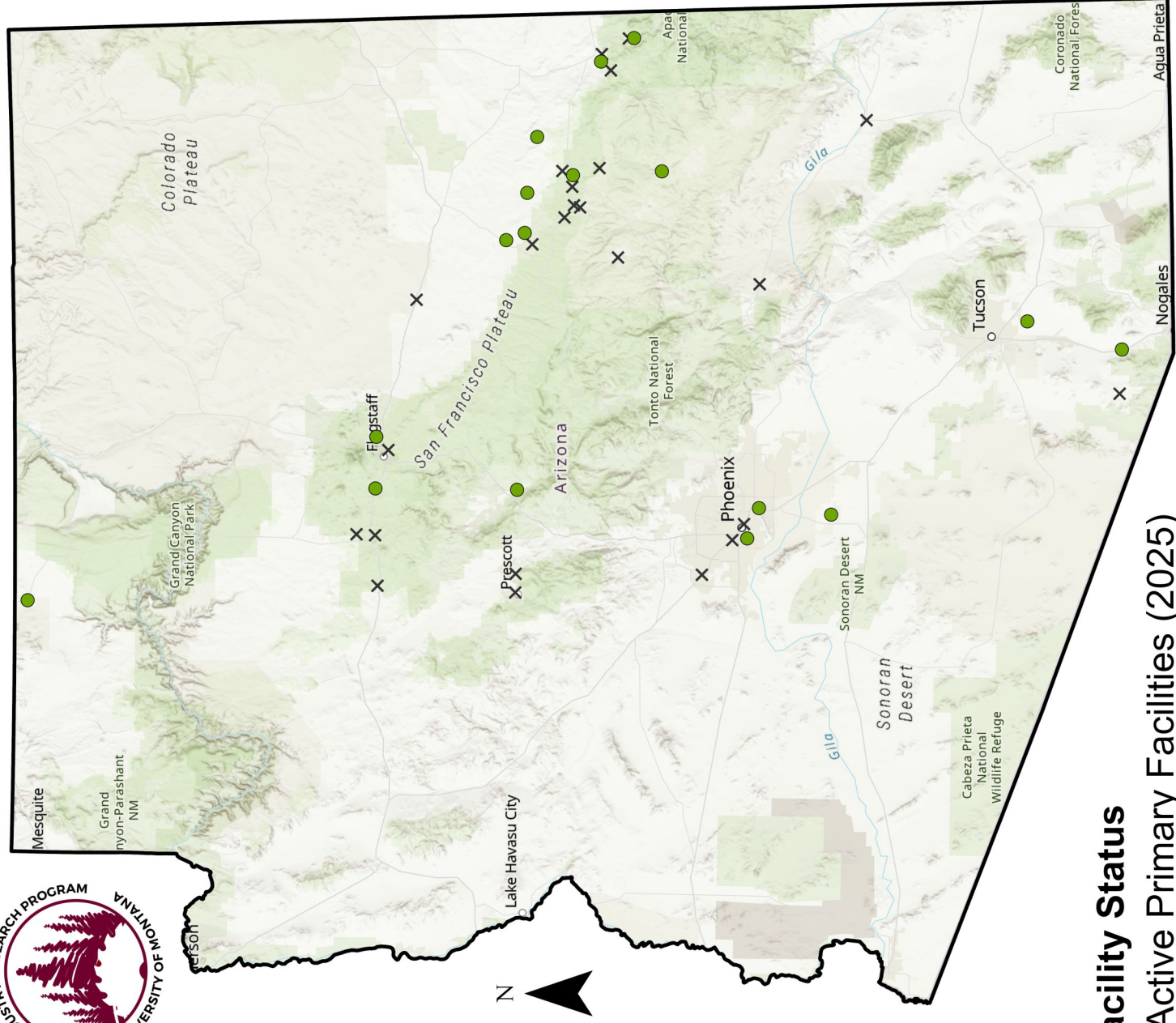
Contact Us:

Bureau of Business and Economic Research

www.bber.umn.edu/FIR

amy.beagles@mso.umn.edu

Arizona Primary Wood Product Facilities



Facility Status

- Active Primary Facilities (2025)
- x Closed Primary Facilities (2000 - 2025)

Sources: Esri, TomTom, Garmin, FAO, NOAA, USGS, © OpenStreetMap contributors, and the GIS User Community, Esri, USGS, University of Montana BBER, Forest Industry Research Program 2025.

Cartographer: Lauren Sampson
lauren.sampson@umt.edu

Contact Us:
Bureau of Business and Economic Research
www.bber.umt.edu/FIR
amy.beagles@mso.umt.edu